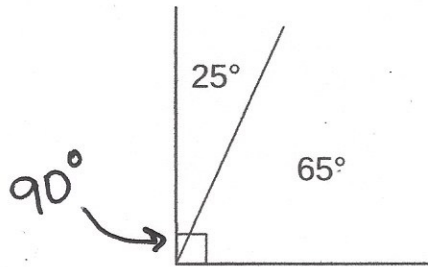


Geometry Bites

(A Little Bite of Geometry for Your Day)

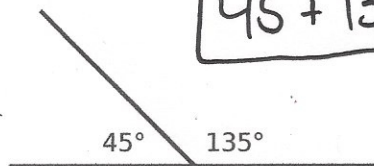
Angles Getting Oppositional

Complementary Angles are angles that, added together, make up a 90° angle. The sum of their measures is 90.

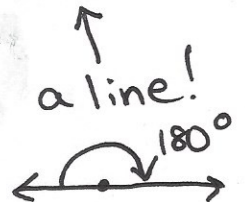


$$25 + 65 = 90$$

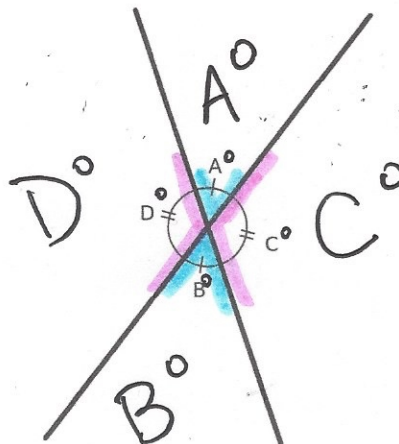
Supplementary Angles are angles that, added together, make up a 180° angle. The sum of their measures is 180.



$$45 + 135 = 180$$

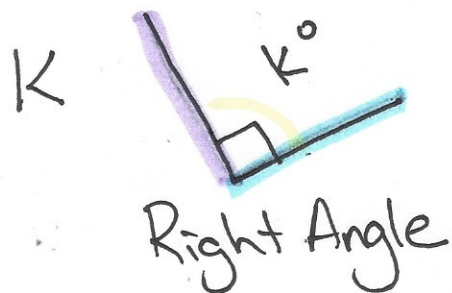
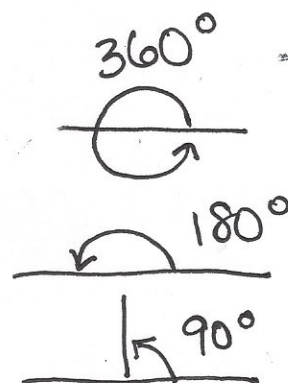
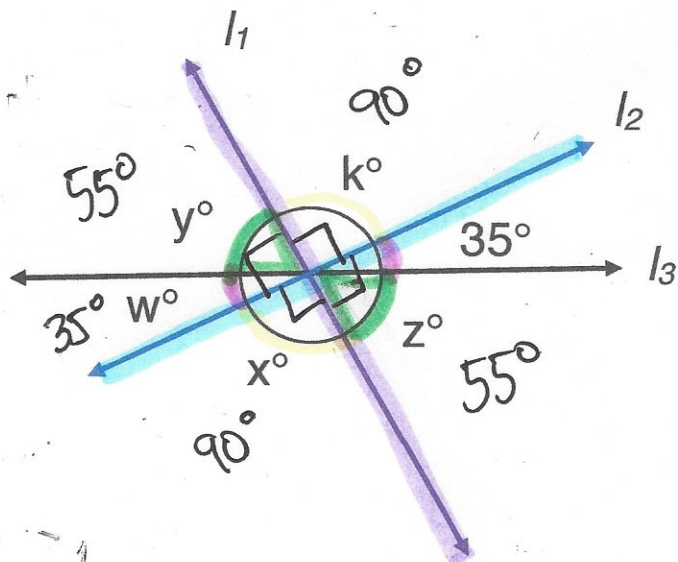


Vertical Angles, or Vertically Opposite Angles, are angles that are formed by two intersecting lines or line segments. They have equal measures.



$$A = B$$
$$D = C$$

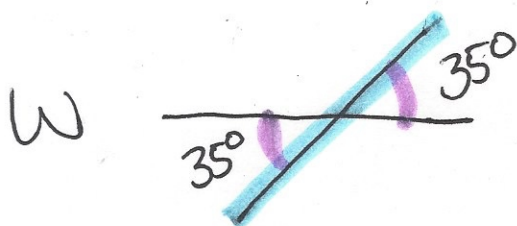
Ex: Find the values of x , y , z , w and k , given that lines l_1 and l_2 are perpendicular:



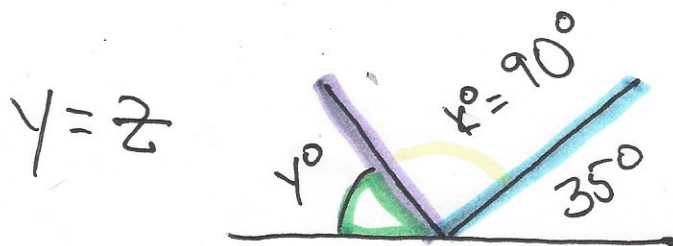
$$k = 90$$



$$x = 90$$



$$w = 35$$



$$y = z$$

$$\begin{aligned}
 y + 90 + 35 &= 180 \text{ supplementary} \\
 y + 125 &= 180 \\
 -125 \quad -125 \\
 \hline
 y &= 55
 \end{aligned}$$

$y = 55$
 $z = 55$